

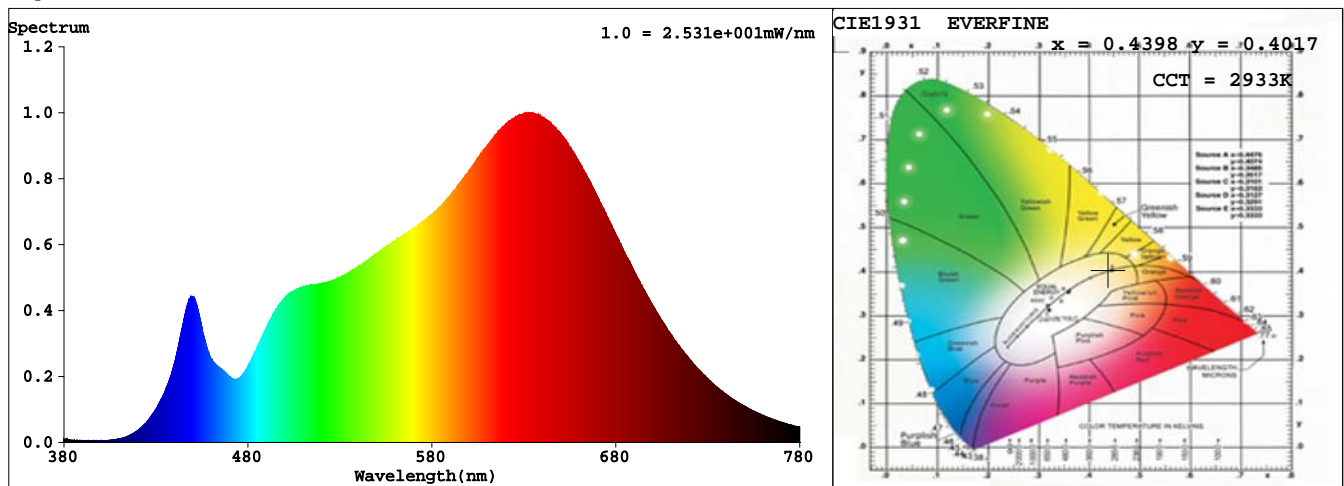
Spectrum Test Report

Sample	:	Date	:	2019-12-15 15:17:03	
Specification	:	YP2019120703 2835 24V120灯 3000K R 1.Sam. Status	:		
Sample No.	:	1463	Instrument	:	HaasSuite(EVERFINE)
Manufacturer	:		Test by	:	
Assessor	:	damin			
Remark	:				

Test Condition

Temperature	:	25.3Deg	RH	:	65.0%
WL Range	:	380nm-780nm	IP	:	53063 (81%)
Test Mode	:	Fast Test	T	:	163 ms
			Sensitivity	:	High

Spectrum



Spectral Distribution

CIE1931 Chromaticity Diagram

Colorimetric Parameters

Chromaticity Coordinate: $x = 0.4398$ $y = 0.4017$ / $u' = 0.2535$ $v' = 0.5209$ ($duv = -1.31e-03$)

CCT= 2933K Prcp WL: $L_d = 583.6nm$ Purity=52.6%

Peak WL: $L_p = 633nm$ FWHM: $=161.4nm$ Ratio: R=25.6% G=71.1% B=3.2%

Render Index: $R_a = 97.5$ CRI = 96.7 AvgR = 96.8 TM30:Rf=96 Rg=102

R1 =99 R2 =99 R3 =99 R4 =97 R5 =98 R6 =96 R7 =97

R8 =96 R9 =91 R10=97 R11=93 R12=95 R13=98 R14=99 R15=99

LEVEL:OUT WHITE:ANSI_3000K

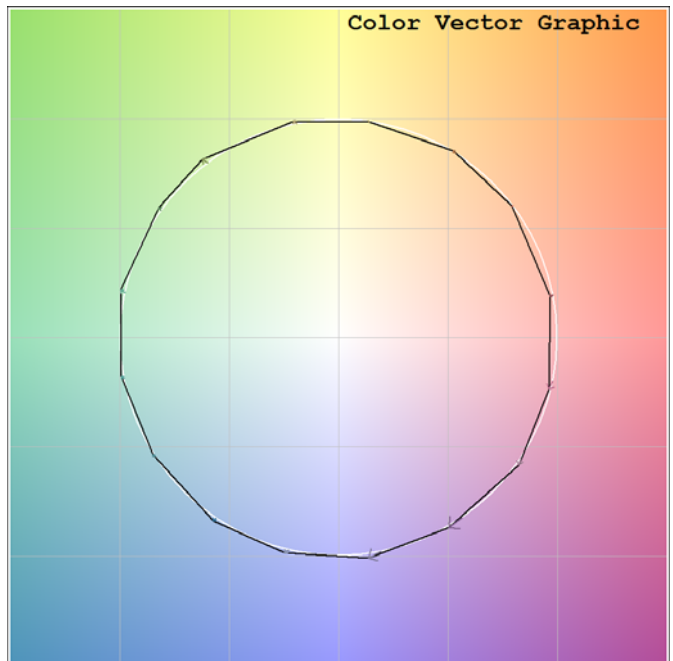
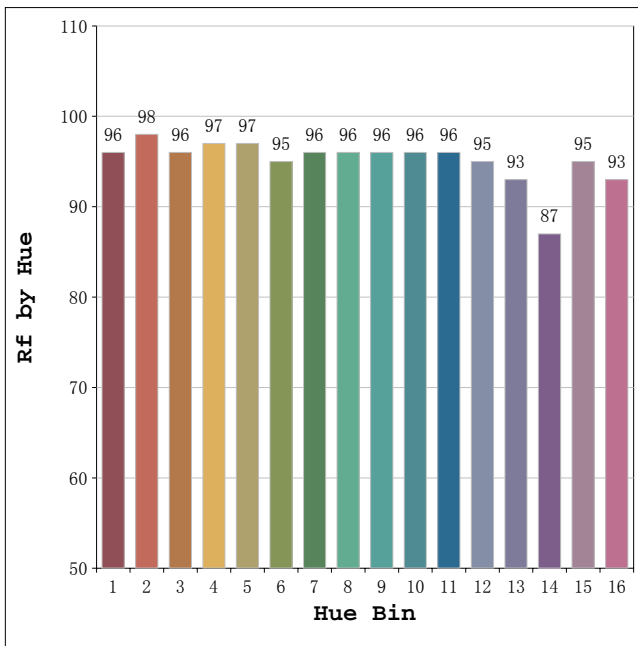
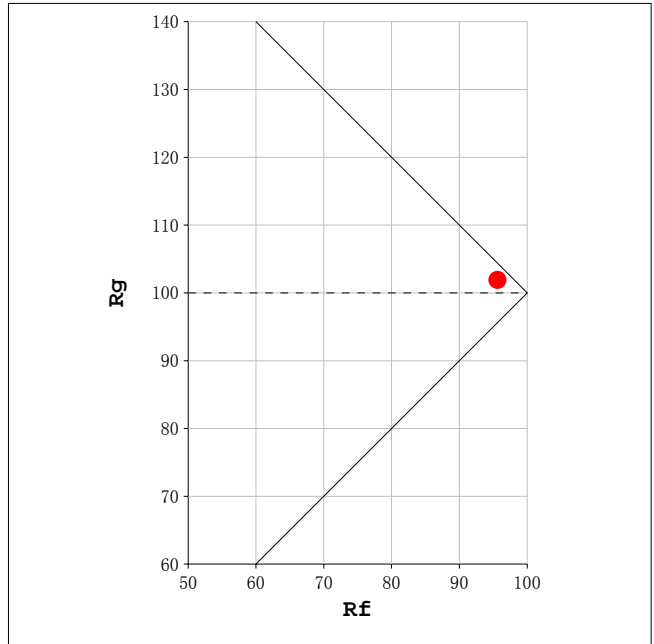
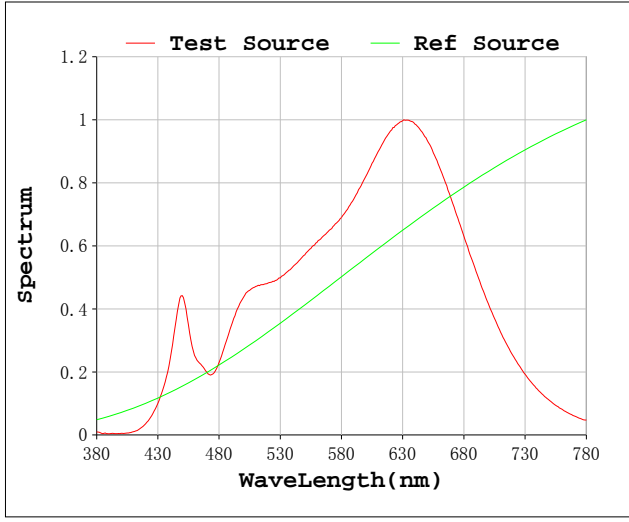
Photometric & Radiometric Parameters

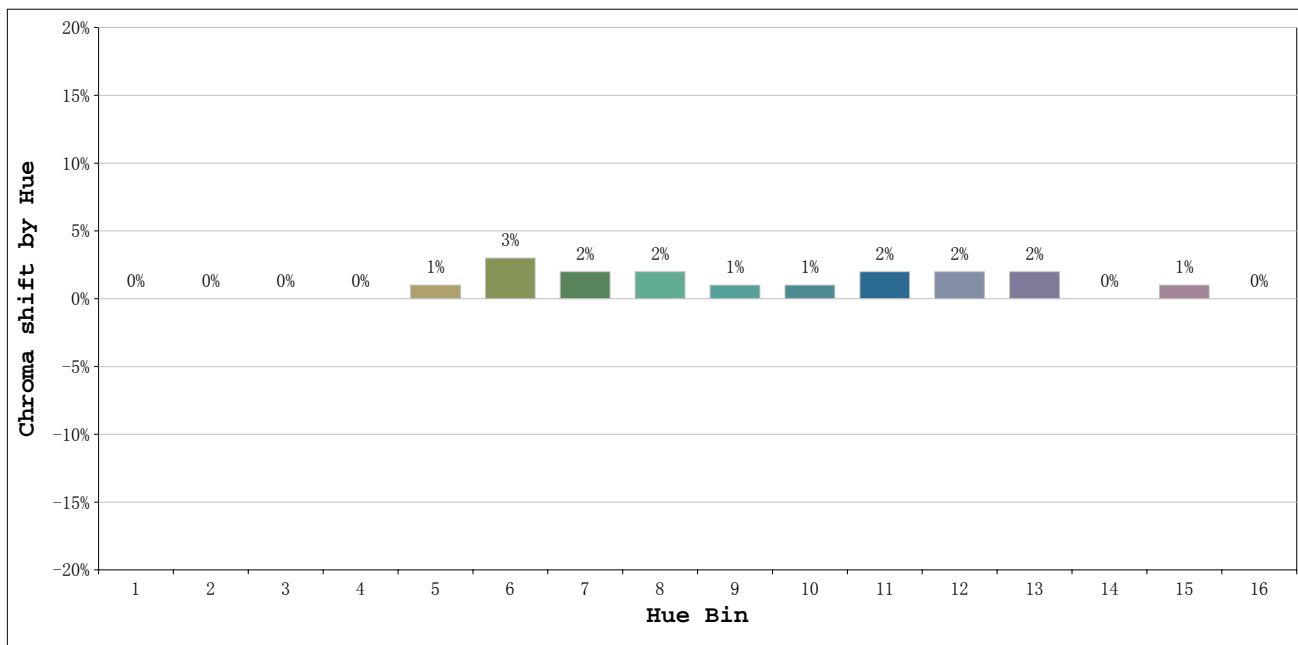
Flux = 1166.9 lm Eff. : 80.57 lm/W $F_e = 4.4331 W$

Electrical parameters

V = 24.00 V I = 0.6035 A P = 14.48 W PF = 1.000 F=0.00 Hz

Rf: 96 CCT: 2933 K u': 0.2535
 Rg: 102 Duv: -0.0013 v': 0.5209





Hue Bin	Hue Angle	Rf	Graphic shift(%)	
			Chroma	Hue
1	0.0° - 22.5°	96	0	0
2	22.5° - 45.0°	98	0	1
3	45.0° - 67.5°	96	0	1
4	67.5° - 90.0°	97	0	0
5	90.0° - 112.5°	97	1	1
6	112.5° - 135.0°	95	3	1
7	135.0° - 157.5°	96	2	0
8	157.5° - 180.0°	96	2	0
9	180.0° - 202.5°	96	1	0
10	202.5° - 225.0°	96	1	-1
11	225.0° - 247.5°	96	2	0
12	247.5° - 270.0°	95	2	-1
13	270.0° - 292.5°	93	2	-5
14	292.5° - 315.0°	87	0	-7
15	315.0° - 337.5°	95	1	-2
16	337.5° - 360.0°	93	0	-3